

**"AWARD  
WINNING  
PROGRAMS"**  
MORE ON THIS IS AMERICA

**OUTSTANDING  
WOMEN LEADERS**  
GET TO KNOW THEM!

Spring 2019 Edition

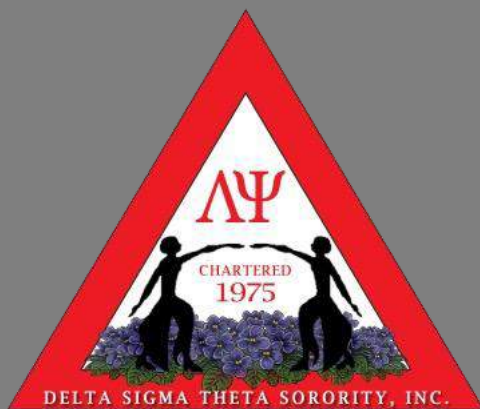
# LAMBDA PSI CHAPTER



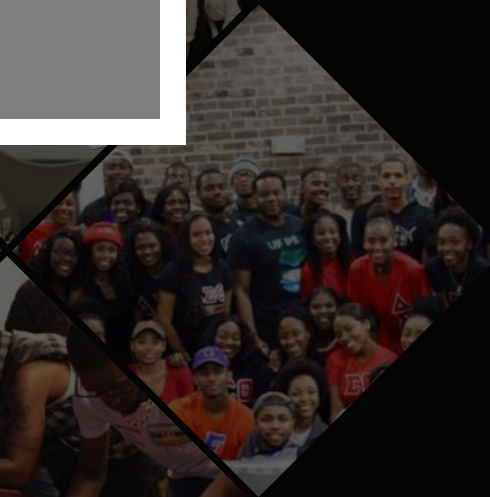
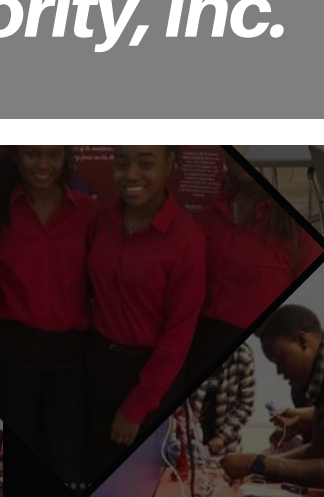
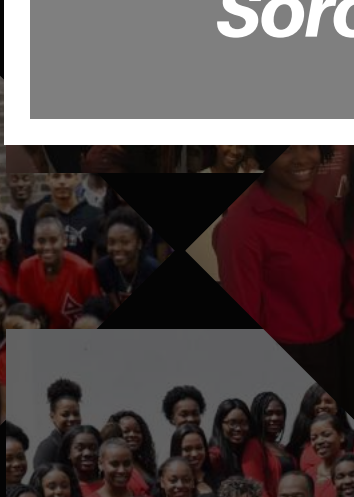
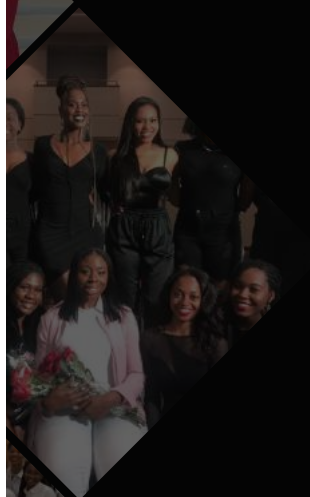
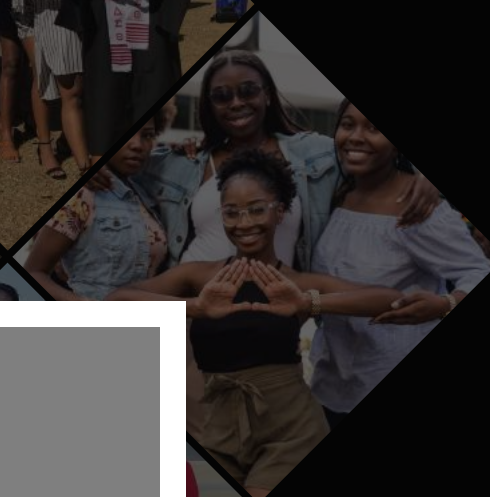
# DIVA DIGEST

An inside look at the goings on of the Lambda Psi Chapter of Delta Sigma Theta Sorority, Inc. at the University of Florida.

ISSUE 1913



***Lambda Psi  
Chapter of  
Delta Sigma Theta  
Sorority, Inc.***





# PRESIDENT'S ADDRESS



Greetings Sorors,  
It is with great honor and pleasure that I share the work and accomplishments of our chapter from the spring 2019 semester. During my presidency, I'm proud of the progress made and the work that was done! Please continue to turn the pages of this edition of Diva Digest where you can learn about our programs and initiatives from spring. Please continue to stay informed about what the chapter is up to in the future!

AOML,

*DeAundra Oldfield*

DeAundra Oldfield  
2018-2019 Lambda Psi  
Chapter President

# CONTENTS

## PROGRAMMING

- 01 EXECUTIVE BOARD**  
*Meet the 2018-2019 Chapter Executive Board*
- 02 FOUNDERS' DAY**  
*See the celebration!*
- 03 MIND, BODY AND SOUL CONFERENCE**
- 05 2019 FLORIDA AND THE BAHAMAS CLUSTER**
- 06 CELEBRATING DR. MARTIN LUTHER KING JR.**  
*A day packed with service and fellowship*
- 07 DATING ON A DIME**  
*A Budget & Finance co-sponsorship teaching the campus how to have a good time on a small dime*
- 08 COMMUNITY GARDEN**  
*Learn about the chapter's latest service initiative*

**12 EXTRA!****FISS WEEKEND**

From the annual stroll-off competition, to the behind the scenes efforts of executing the show, Lambda Psi was all over it! Turn the pages to read more.

- 10 NATIONAL BLACK HIV/AIDS AWARENESS DAY BLOCK PARTY**
- 10 CRIMSON VALENTINE**  
*A candy gram fundraising co-sponsorship*
- 11 WITH PRIDE: UPLIFTING BLACK ARTIST AND ACTIVISTS**
- 12 FLORIDA INVITATIONAL STEP SHOW**
- + LP IN THE COMMUNITY**
- 13 LIVING WAX MUSEUM**
- 13 DELTA G.E.M.S. WORKSHOP**
- 14 HOPE MEALS**
- 15 SPRING WEEK**  
*Learn how we guided members of the campus community to uncover societal taboos in our "Escape Room" themed week of programming*
- 17 GATOR NATION FIELD DAY**



**CONGRATS GRADS!**  
Meet the sorors who will transition into Alumnae life



**NEW EXECUTIVE BOARD**  
Who's running the show next year? This page will put you in the know!

**22 LETTER FROM THE EDITOR**  
*Signing off*



# 2018- 2019 Executive Board

## **PRESIDENT**

DeAundra Oldfield

## **2ND VICE PRESIDENT**

Mia Mister

## **TREASURER**

Myia O'Neal

## **AUDIT CHAIR**

Kaitlyn Youngblood

## **1ST VICE PRESIDENT**

Christela Tout-Puissant

## **FINANCIAL SECRETARY**

Martina Onyenwe

## **ADMINISTRATIVE SECRETARY**

Romae Morgan

## **Committee Chairs**

### **ARTS & LETTERS**

Bahasi Chapman

### **BUDGET & FINANCE**

Myia O'Neal

### **CAMPUS OUTREACH**

Renee Kennedy

### **PASS THAT BOOK**

Brianna Moon

### **COMMUNITY SERVICE**

Nheissa Isidor

### **MEMBERSHIP SERVICES**

Mia Mister

### **PHYSICAL AND MENTAL HEALTH**

Zaniya Brown

### **PROGRAM PLANNING AND**

### **DEVELOPMENT**

Christela Tout-Puissant

### **SCHOLARSHIP**

Brianna Lowder

### **SOCIAL ACTION**

Amber Donald

### **WAYS & MEANS**

Tyra Striker



# FOUNDERS' DAY

# 106 YEARS

JANUARY 13, 2019



This year's Founders' Day celebration was certainly one to remember! Sorors celebrated the dynamic 22 women who founded our illustrious sorority with a weekend packed full of events. Starting Friday, January 11th, the chapter informed the campus about our organizations history in a set presentation. The following Sunday, January 13th, sorors fellowshipped with Gainesville Alumnae Chapter sorors in a worship service at Greenhouse Church and a brunch shortly thereafter.



At the fifth annual Mind, Body, and Soul Conference, we dove deep into what it really meant to be a woman who embodies beauty but also maintains the ability to tap into her inner beast.

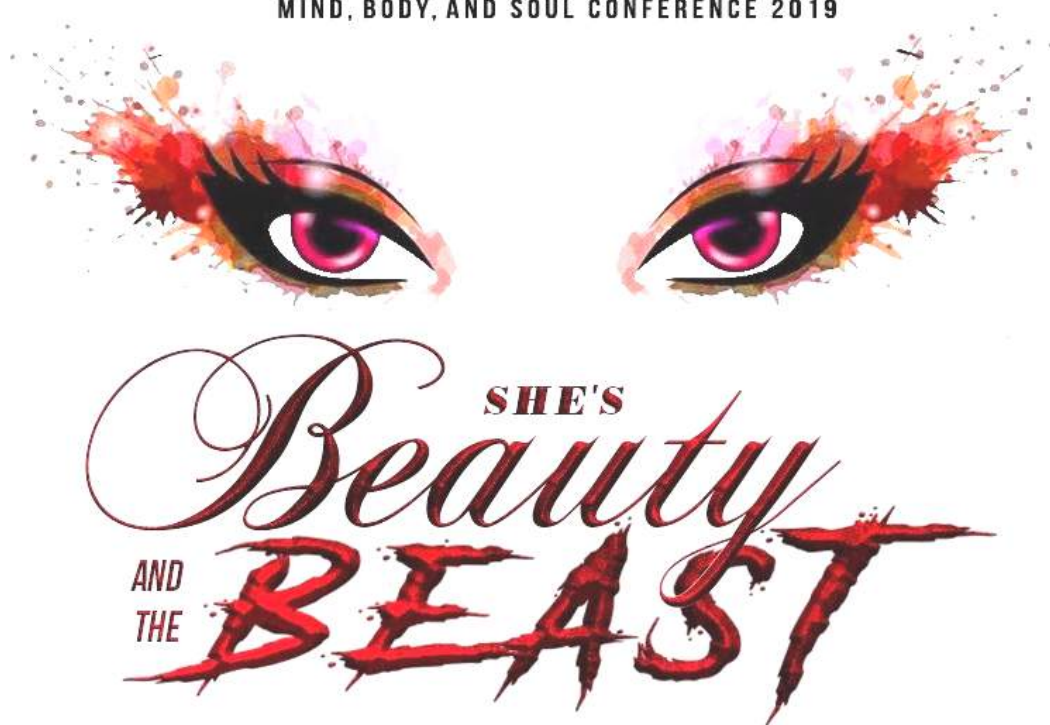
On Day 1, we tackled the mind with workshop sessions. The session called "The REAL You" challenged attendees' personal definitions of beauty and encouraged them to affirm themselves and reframe negative thoughts they may have.

"No Justice, No Peace" called women to action in using their bodies to protest! Using some existing movements as examples (i.e. #MeToo, Slut Walk, Women's Wall), we tasked everyone with establishing their own movement to empower women.

"Her purpose, her pace: a game called L.I.F.E" discussed how various scenarios affect black women emotionally and professionally in the form of a life-sized board game.



THE LAMBDA PSI CHAPTER OF DELTA SIGMA THETA PRESENTS  
MIND, BODY, AND SOUL CONFERENCE 2019



JANUARY 11-12 | REGISTER AT [LPDST.COM](http://LPDST.COM)

# PSI CHAPTER OF DELTA SIGMA THETA PRESENTS MIND, BODY, AND SOUL CONFERENCE 2019

At the fifth annual Mind, Body, and Soul Conference, we dove deep into what it really meant to be a woman who embodies beauty but also maintains the ability to tap into her inner beast.

On Day 1, we tackled the mind with workshop sessions. The session called "The REAL You" challenged attendees' personal definitions of beauty and encouraged them to affirm themselves and reframe negative thoughts they may have.

"No Justice, No Peace" called women to action in using their bodies to protest! Using some existing movements as examples (i.e. #MeToo, Slut Walk, Women's Wall), we tasked everyone with establishing their own movement to empower women.

"Her purpose, her pace: a game called L.I.F.E" discussed how various scenarios affect black women emotionally and professionally in the form of a life-sized board game.





The Lovely Ladies of the Lambda Psi Chapter spent the weekend of January 18th through 20th at the 2019 Florida & The Bahamas Cluster in Ponte Vedra, FL. We enjoyed this time learning at the various workshops and interacting with our sorors. By far, the highlight of the weekend was winning Delta Jeopardy. Most importantly, we learned the importance of practicing self-care and to not mistake it with selfishness. We also had the pleasure of meeting one of our chapter's very own charter member: Janie Mae Fulton. We met a host of other past Lambda Psi sorors as well.



# 2019 FLORIDA AND THE BAHAMAS CLUSTER PONTE VEDRA BEACH, FL





# Celebrating Dr. Martin Luther King, Jr.



On January 21st, the chapter celebrated the life and legacy of Dr. Martin Luther King, Jr. by dedicating our morning to completing a service activity in a historically black cemetery in Archer, FL with other chapters in the National Pan-Hellenic Council. Shortly thereafter, we participated in the Gainesville MLK March alongside Gainesville Alumnae Chapter sorors. It began in Bo Diddley Plaza in Downtown Gainesville and concluded at the MLK Center on the east side of town.

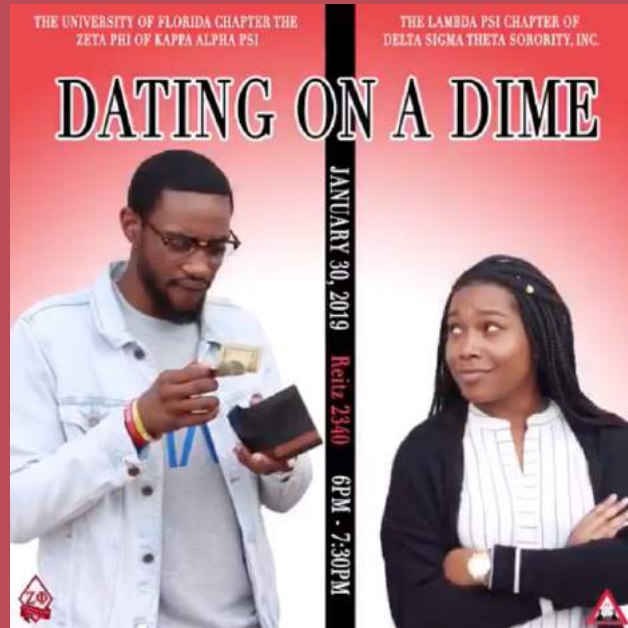


# DATING ON A DIME

**January 30, 2019**

Through a cosponsorship with the Zeta Phi Chapter of Kappa Alpha Psi Fraternity, Inc., we taught the campus how to take someone on a romantic or platonic date without breakeing the bank, just in time for Valentine's Day.

Between a dating simulation, debrief, and relationship panel featuring our chapter advisor and her husband, attendees were equipped with tangible knowledge on how to plan an engaging date in Gainesville on a college student's budget.





**February 2, 2019**

PLANTING DAY FOR THE

# *Community Garden*

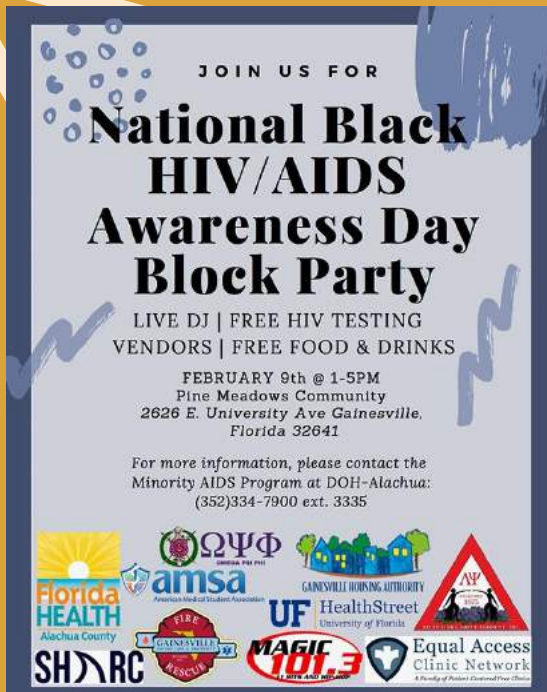
As part of a new chapter initiative, we partnered with a church in an underserved area in Gainesville to initiate a community garden. The goal of the garden is to serve as a sustainable source of produce for the communities that are classified as food deserts, much of which is home to black residents. On planting day, we began to see the fruits of much of the behind the scenes work come to fruition. As the time goes on, we will continue to nurture the garden and bring forth produce to serve the public.







# National Black HIV/AIDS Awareness Day Block Party



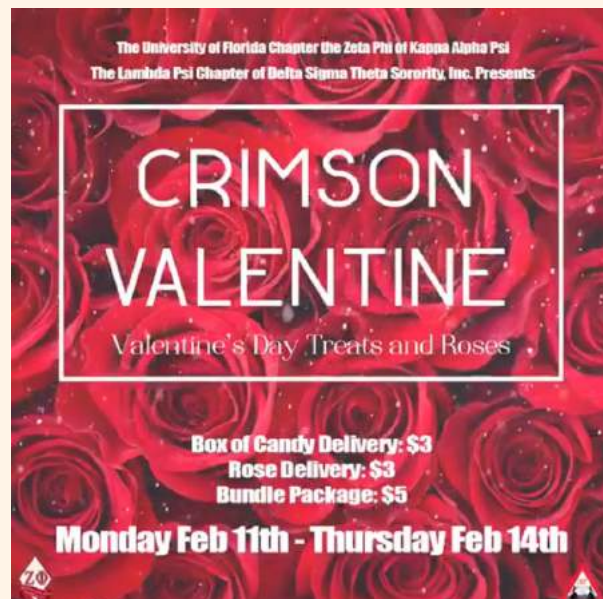
**In a cosponsorship with several other organizations, the chapter attended the National Black HIV/AIDS Awareness Day Block Party to increase awareness amongst the black community and encourage people to get tested in order to learn their status.**

**2. 9.19**

## Crimson Valentine

**2. 11.19**

**In another cosponsorship with the Zeta Phi Chapter of Kappa Alpha Psi Fraternity, Inc., we distributed candy grams for Valentine's Day. Students were able to place orders via social media and in-person at Turlington Plaza during tabling. This was a program through the Ways and Means Committee.**







# WITH PRIDE: UPLIFTING BLACK ARTISTS AND ACTIVISTS

2.10.2019



With the combined efforts of the Social Action and Arts & Letters Committees, we celebrated Black History Month by honoring black LGBTQ pioneers of the past, recognized artists and activists of the present, and empowered those of the future. We reflected on the journeys of some trailblazing artists and activists of today who work tirelessly to keep the dream alive. These artists unapologetically push boundaries even further to ensure queer people of color are seen and appreciated through their various forms of art.



# FEBRUARY 15-17, 2019

# FISS Weekend

## FLORIDA INVITATIONAL STEP SHOW

Congratulations are in order for many members of the chapter as it relates to FISS Weekend. Beginning with the FX Fashion Show on Friday night, Soror Nheissa Isidor gave a jaw-dropping performance as one of the models.



Then, Saturday afternoon members of the step team competed in the annual stroll-off competition against other UF NPHC organizations and Lambda Psi took home first place for the 3rd year in a row!

To conclude the weekend, Soror Christela Tout-Puissant did an amazing job executing the actual step show serving as FISS Director this year! And Soror Danie Etienne represented well as the leader of the NPHC Unity Step.







# WORKING WITH THE COMMUNITY

*2.21.2019*

## WORKING WITH THE DELTA ACADEMY & G.E.M.S.

During Collegiate Connection Month, we coordinated with the Gainesville Alumnae Chapter to present a workshop to their Delta Academy and G.E.M.S. members. We talked with them about how to sustain a healthy lifestyle as well as how to thrive and survive in college.



The chapter had the pleasure of assisting with the Black History Month Living Wax Museum Event at Rawlings Elementary School! The students served as wax figures representing black historical pioneers and educated others on black achievement. Students were provided with treats for their outstanding performance along with great culturally-inclusive books from our Pass That Book initiative!

## LIVING WAX MUSEUM

*2.28.2019*





# SPRING IN THE COMMUNITY

4.9.2019

In a partnership with campus organization HOPE Meals, members of the chapter helped distribute bag lunches to Gainesville's homeless camp GRACE Marketplace. This was a humbling, eye-opening experience where we were able to reach out and bless others.



HOPE  
MEALS





THE LAMBDA PSI CHAPTER OF DELTA SIGMA THETA SORORITY, INC. PRESENTS

# ESCAPE ROOM

3/24: **SUNDAY**

**BREAKTHROUGH**

PASSAGE FAMILY CHURCH | 11AM

3/25: **MONDAY**

**GRIDLOCKED: A LOOK  
INTO HUMAN TRAFFICKING**

REITZ 6310 | 6:13PM

3/26: **TUESDAY**

**VAULT 1-9-1-3:  
THE ULTIMATE ESCAPE**

REITZ 6320 | 6:13PM

3/27: **WEDNESDAY**

**SAFEHOUSE: MEN'S APPRECIATION EVENT**

WOODLANDS CLUBHOUSE | 6:13PM

3/28: **THURSDAY**

**BREAKING BOUNDARIES: FROM LIKES TO DOLLARS**

REITZ 2330 | 6:13PM

3/29: **FRIDAY**

**CLOSED SERVICE EVENT**

LAMBDA PSI COMMUNITY GARDEN

3/30: **SATURDAY**

**CAR WASH**

12PM - 3PM | CHEVRON ON 34TH & UNIVERSITY



## SPRING WEEK

For this year's Spring Week, we social taboos in a series of programs themed "Escape Room."

WE BEGAN THE WEEK WITH A CHURCH SERVICE WHERE WE INVITED THE COMMUNITY TO FELLOWSHIP WITH US AND BEGIN THE WEEK WITH GOD IN OUR MINDS AND SPIRITS.

MONDAY MARKED THE FIRST PROGRAM OF THE WEEK HOSTED BY THE SOCIAL ACTION COMMITTEE. LOCAL ORGANIZATION REPRESENTATIVES OFFERED A DEEPER UNDERSTANDING OF WHAT HUMAN TRAFFICKING IS AND HOW WE CAN ALL BE ADVOCATES FOR THOSE WHO MAY BE IN DANGER.

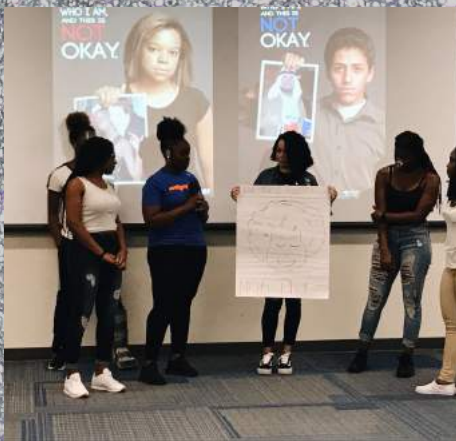
TUESDAY WAS SPONSORED BY ARTS & LETTERS. THIS EVENT WAS A REAL LIFE ESCAPE ROOM WHICH TAUGHT ATTENDEES ABOUT THE WAYS BLACK ART IS OFTEN CULTURALLY APPROPRIATED.

ON WEDNESDAY, CAMPUS OUTREACH OFFERED A SAFE SPACE FOR MEN TO ANALYZE SOCIAL TABOOS AND EVALUATE WHAT IT REALLY MEANS TO BE A MAN IN TODAY'S WORLD.

ON THURSDAY WE TOOK A LOOK AT HOW WE COULD ALL STAND TO BENEFIT FINANCIALLY FROM USING SOCIAL MEDIA AS A BRANDING AND MARKETING TOOL RATHER THAN A PASS TIME.

AND FINALLY, TO CLOSE OUT THE WEEK ON FRIDAY AND SATURDAY CHAPTER MEMBERS WORKED IN OUR COMMUNITY GARDEN AND PUT ON A CAR WASH THROUGH THE WAYS AND MEANS COMMITTEE.







4.20.2019

# 12TH ANNUAL GATOR NATION FIELD DAY

Gator Nation Field Day is a staple chapter events that directly promotes the Physical and Mental Health thrust. Each year we choose a philanthropy that will benefit from the proceeds of registration. Through our "Crimson Olympics," we raised \$200 for the Gainesville National Alliance on Mental Illness. We had 2 rounds of 6 stations, a lunch intermission and dance battle all before announcing the Theta Sigma Chapter of Alpha Phi Alpha the winners.

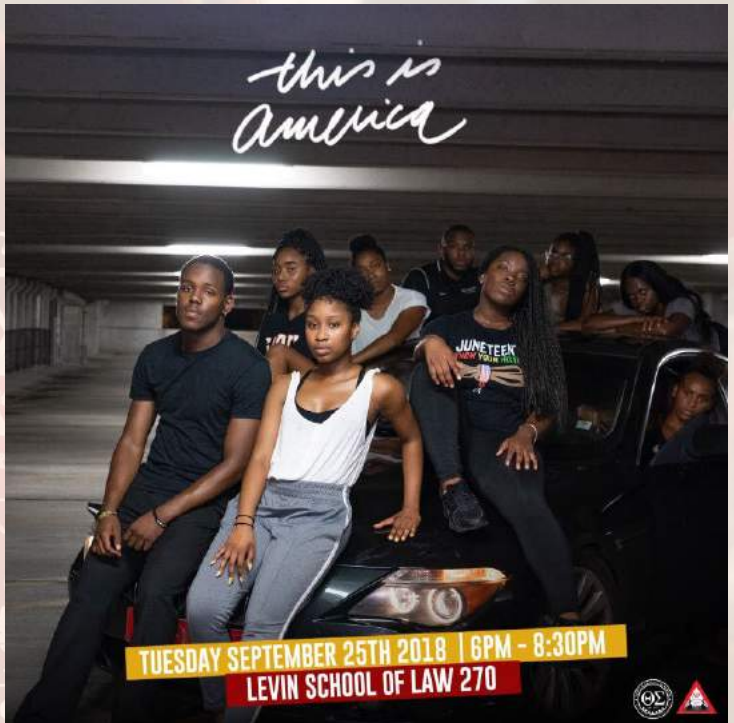




# DR. PAULETTE C. WALKER CHAPTER "SOCIAL ACTION AWARD"

We are proud to have received this award during the 25th Annual Florida Delta Days at the Capital for our inaugural "This is America" program inspired by the popular song and video which highlights inequities in society relating to social justice and race. Back in September, we educated the campus about the effects of the prison industrial complex alongside the Theta Sigma Chapter of Alpha Phi Chapter of Alpha Phi Alpha Fraternity, Inc.

*this is America*





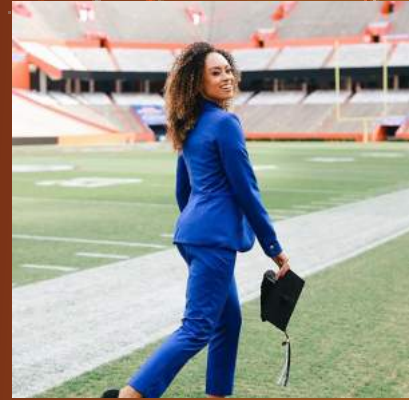
# *Congratulations to our 2019 Graduates!*



**BAHASI  
CHAPMAN**



**DANIE ETIENNE**



**BROOKE  
HENDERSON**



**RENEE  
KENNEDY**



**SIMONE  
LOFTMAN**



**BRIANNA  
MOON**



**ROMAE  
MORGAN**



**MYIA O'NEAL**





DEAUNdra  
OLDfield



COREY  
STAPLES



HEAVEN  
TAYLOR-WYNN



CHRISTELA  
TOUT-PUISSANT



DENNESIA  
TURNER



# 2019- 2020 Executive Board

## **PRESIDENT**

Brianna Lowder

## **2ND VICE PRESIDENT**

Nheissa Isidor

## **TREASURER**

Amber Donald

## **AUDIT CHAIR**

Tyra Striker

## **1ST VICE PRESIDENT**

Martina Onyenwe

## **FINANCIAL SECRETARY**

Ashley Garner

## **ADMINISTRATIVE SECRETARY**

Mia Mister

## **Committee Chairs**

### **ARTS & LETTERS**

Bailey Wingate

### **BUDGET & FINANCE**

Amber Donald

### **CAMPUS OUTREACH**

Mia Mister

### **COMMUNITY GARDEN &**

### **PASS THAT BOOK**

Martina Onyenwe

### **COMMUNITY SERVICE**

Nheissa Isidor

### **MEMBERSHIP SERVICES**

Nheissa Isidor

### **PHYSICAL AND MENTAL HEALTH**

Mia Mister

### **PROGRAM PLANNING AND DEVELOPMENT**

Martina Onyenwe

### **SCHOLARSHIP**

Ashley Garner

### **SOCIAL ACTION**

Amber Donald

### **WAYS & MEANS**

Tyra Striker



# LETTER FROM THE EDITOR



It's been my pleasure serving as the chapter newsletter editor for the past year. I take pride in recounting so many memories and accomplishments of this beloved chapter. As I am one of the graduating sorors, I hope and pray the person who follows me will enjoy each and every moment archiving the chapter's history as I have. Thank you for reading to the end.

*You may continue following the work of the Lambda Psi Chapter of Delta Sigma Theta Sorority, Inc. on our website at the following:*



**@LambdaPsiDivas**



**www.LPDST.com**

**AOML,**

*Heaven  
Taylor-Wynn*